



Fact Sheet

Introduction

The Equip Hire System is a software package designed for equipment hire (rental) businesses, and for organisations that manage events. The system was specifically designed to address the logistical problems of supplying equipment for any type of event, exhibition or show. The kind of equipment being provided is unimportant, but the system lends itself to handling items that can be grouped into sets or 'structures'.

No special knowledge is required to use the system as training, telephone support and online Help is provided with the software package. One person may act as system administrator, and he or she can control the level of access available to other users of the system, through the user security options built into Equip.

Equip is the easiest to use, most flexible and powerful business software available for managing the provision of equipment in the event industry.

System Overview

The system consists of a number of logical areas or 'entities' as shown in Diagram 1 opposite.

The arrows in the diagram represent relationships between each of the system's entities. For example, each event may be linked to one or more order, and each order must be linked to a customer.

Equip has been designed using relational database principles to ensure maximum flexibility whilst providing a robust system architecture.



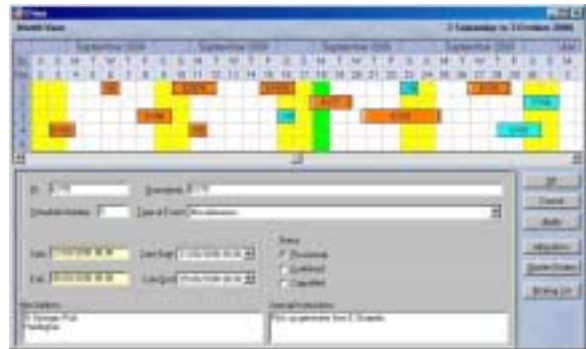
Diagram 1

Fact Sheet

Features

Event Diary

- Easy to use planner with 'Drag and Drop' capabilities
- May be customised to user requirements
- Provides immediate access to hire (rental) details for viewing or editing
- Drill-down into Orders, Allocations and Picking List



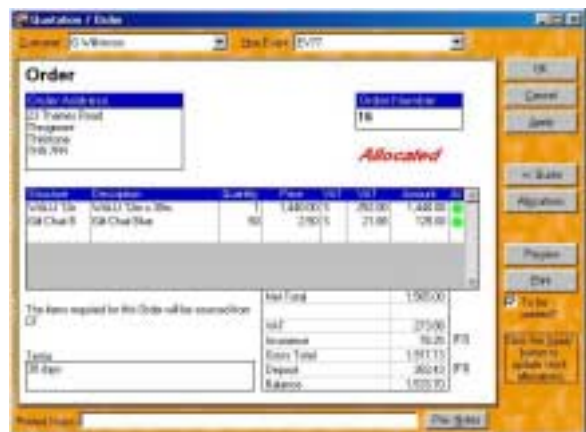
The Diary presents events in a graphical format that is easy to understand and manipulate. Users can 'drag and drop' time bars that represent individual events to position them on the required start and end dates. Each event may be selected and then edited using the form in the lower half of the Diary window. Changes made using the Event form are reflected immediately on the Diary.

Order No.	Status	Customer	Event	Amount
16	Order	S. Wilkinson	EV77	303.43
17	Order	Mrs Bredbury	EV70	294.00
18	Order	Mrs Bredbury	EV70	352.00
19	Order	Fred Bloggs	EV875	764.40
20	Quotation	S. Wilkinson	EV80	1.47
21	Quotation	S. Wilkinson	EV90	0.00
22	Quotation	Fred Bloggs	EV90	1,774.79
23	Order	Sally Flatmore	EV90	764.40
24	Order	Fred Bloggs	EV90	764.40
27	Order	Sally Flatmore	EV94	764.40
28	Order	S. Wilkinson	ev80	1.47
29	Order	Joan Evers	ev80	352.00
28	Order	Fred Bloggs	ev90	352.30

Quotations / Orders

- Simple Quote and Order creation
- Immediate indication of any over allocated items when creating an Order
- Ability to convert from Quote to Order OR Order to Quote easily
- 'One click' Quotation / Order print review / printing
- Drill-down into Allocations

Orders may be listed in a window, as shown above (see *List Views* section). From the list view, new orders may be created and existing orders selected for editing and deletion. The Order Edit form (shown opposite) is used to enter and amend quotation / order details. When a quotation is converted into an order the system automatically calculates the stock required and indicates any shortages using a simple 'traffic light' system.

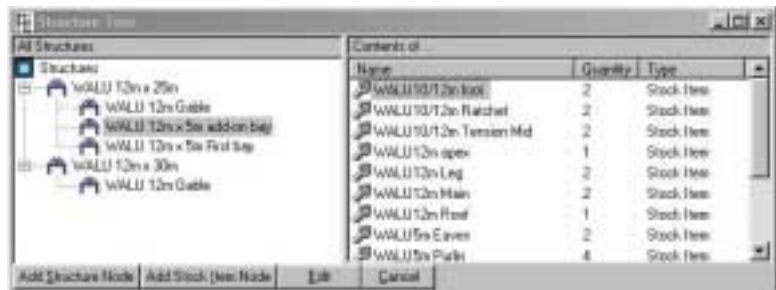


Fact Sheet

Structures

- The Structure Tree provides an easy to use visual tool for building and storing complex groups of items that reflect on-site construction
- Build Time and Dismantle Time can be set for each Structure
- Overall Lead and Lag times for each Event are calculated from the structures used
- Hire prices, VAT and Insurance can be set for any Structure, simplifying creation of customers' orders

'Structure' has a special meaning in Equip. A Structure can represent a real-world structure (e.g. a marquee frame) or may just be a collection of items that are always hired as a group (e.g. a table, tablecloth, knives, forks, and spoons).



The Structure Tree window provides the user with an easy-to-edit graphical representation of all the structures available for a hire event. Equip's use of structures simplifies the creation of an order. Instead of entering every individual item required for an event, the user only has to enter a few structures. The system calculates all the items required from the structure definitions.



Stock Control

- Easy management of stock at multiple depots
- Goods received, stock level adjustment, price adjustment
- Complete transaction history for every item

Equip includes a stock control sub-system that provides all the functions required to manage and track stock items at multiple depots.

Each item's details are split into 'global' (i.e. applicable to all depots) and 'local' (i.e. applicable to a specific location). When this system is combined with Equip's user security features, it can be used to restrict users either to central or local updates only.

All stock transactions are recorded with before and after balances and prices. This detailed transaction history can be interfaced to the company's general ledger if required.

Fact Sheet

Customers / Suppliers / Employees

- Contact database
- May be categorised and grouped as required

The windows used to edit customer, supplier and employee details have a similar layout (different fields), using 'tabs' to separate the details recorded. For example, the screen shot opposite shows a customer edit window with three tabs: Personal, Home and Business.



Customer	First Name	Last Name	Business Tel.	Home Tel. No.
St John Ambulance	Bob	Ayling	01045 9255 55	
Hoves	Brenda	Hoves		01484 868768
California Haquees	California	Haquees	01455 765432	
Green Marquess	Starr	Haquees	08765 555 444	
Hay/Worthcombe	Nicky	Worthcombe		01204 836876
Herman	Kath	Herman		01504 456876
Gurley	Sheld	Gurley		01504 767876
Yorkshire Air Museum	Yorkshire	Air Museum	01754 819999	

List Views

- Familiar and easy to use format
- Columns may be sorted into ascending or descending order by clicking on the column headers
- Standard button controls

Throughout Equip there are numerous examples of the 'List View'. These are simply windows that display a list of database records. From this window a user is able to create a new item, or select an item to edit or delete. Usually a 'Report' button is also available, allowing a user to produce a hard copy report of the list.

Reporting

- Easy to use customisable reporting facility
- Export to Word™, Excel™, other Windows™ applications
- Send as Email

The screen shot opposite shows a typical print preview window. The headings, footers, database fields to be included, and field widths are all customisable.

Item No.	Description	Price	Quantity	Total	Status	Location Address
10001	10001 - 10001	100	100	10000	Ordered	10001 - 10001
10002	10002 - 10002	100	100	10000	Ordered	10002 - 10002
10003	10003 - 10003	100	100	10000	Ordered	10003 - 10003

Fact Sheet

General

- User access security with password protection, enabling individuals to be restricted to certain options only
- Context sensitive Help
- Updates provided regularly via the Mobius web site
- Use of standard database allows use of external reporting, charting and analysis tools
- Easy to use Backup and Restore feature. Data saved in standard 'zip' format
- Built-in error logging for easier problem resolution



User security is easy to administer. A designated 'system administrator' is able to edit each user's profile with the window shown opposite, to enable or disable access to different parts of the system. A user with restricted access will have fewer menu options available to him/her.

Component Architecture

Equip was designed using the principles of Component-based Scalable Architecture (CSLA) - an n-tier system architecture.

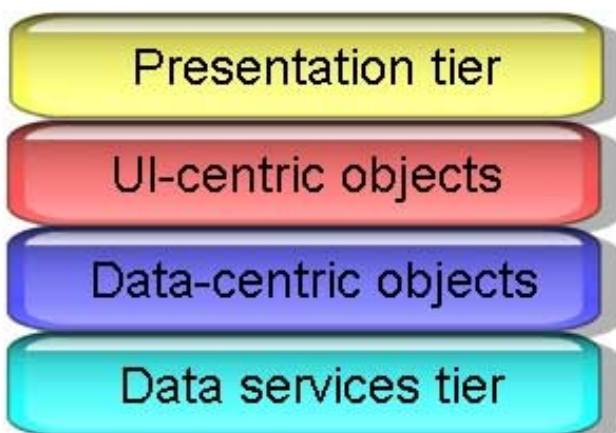


Diagram 2

This builds in flexibility for future development by separating the user interface (UI) or 'Presentation tier', the business rules ('UI-centric' and 'Data-centric' business objects) and the database access ('Data services tier').

For example, changing Equip to operate on a different database would require a limited set of amendments to the Data-centric objects only. The other layers of the system would be unaffected.

This architecture also means that the same system can operate on a number of different operating platforms.



Fact Sheet

System Requirements

To install Equip, you will need:

- An IBM-compatible personal computer with a Pentium processor
- 32 Mb of RAM (Random Access Memory)
- 30 Mb of free disk space
- A high resolution 256-color monitor - set at a minimum of 640 x 480 resolution
- Windows 95/98/NT
- (Optional) A printer supported by Windows if you plan to print quotations, orders and other reports.

The recommended configuration for Equip is as follows:

- An IBM-compatible personal computer with a Pentium III 533MHz or Celeron 500MHz processor
- 128Mb of RAM
- 50 Mb free disk space
- A true colour (32 bit) 17 inch monitor set at 1024 x 768 resolution
- A printer supported by Windows if you plan to print quotations, orders and other reports.
- Windows 95/98/NT

About Mobius

Mobius provide modern information technology solutions for industry, using proven techniques and with an understanding of business gained over 20 years in IT.

Mobius provide a range of consultancy services; from on-site project management, systems analysis and design, business intelligence solutions, through to technical training. Our consultants operate across the UK and are able to help with projects varying in size from minor documentation updates to projects lasting several months. Because of our flexible approach and accumulated IT experience, we can deliver real benefits to your business, enhancing your existing skill set and boosting your IT productivity.

Mobius IT Solutions Limited	T	+44 (0) 1484 546053
12 Beechwood Grove	F	+44 (0) 1484 314483
Fixby	M	07932 662409
Huddersfield	E	info@mobius-it.com
HD2 2FF	W	www.mobius-it.com